



Impact Report

EVERY MOTHER'S ADVOCATE

2 0 2 2 - 2 0 2 3



Table of Contents

03

Letter from Founder

04

Mission + Vision

06

Our Model

07

Best Year Yet

08

Celebrating a Milestone Year

10

National Impact

11

Florida Impact

12

Our Outcomes

15

The Cost of Prevention

16

Financials

17

What's Next?

19

Thank You!

Dear FRIENDS



In 2011, Every Mother's Advocate (EMA) was birthed with a vision to invest in the dignity, agency, and strength of every mother in crisis and empower families to flourish. Over the years, we have had the honor of serving countless mothers and families in crisis. We have witnessed firsthand the transformative power of advocacy and the difference it can make in the lives of vulnerable families. We have seen mothers who were once overwhelmed and hopeless find the strength and support they need to thrive and build a better future for themselves and their children.

However, the reality is this work requires dedication, persistence, and a deep commitment to our mission. It requires us to stand with mothers in their most vulnerable moments and to advocate for them in the face of difficult circumstances. It requires us to invest in relationships and to build a network of support around each mother and family we serve.

As we look back, we are so proud of the lasting impact we have made so far, but recognize there is still much work to be done. Thousands of mothers and families in crisis remain, and too many children are being removed from their families and placed into foster care for reasons that could be prevented.

That is why we are deeply grateful for your support and partnership with our mission. Because of partners like you, we are able to continue advocating for every mother in crisis and prevent family separation. I want to invite you to reflect on all that God has done, and continue on this journey with us to create a world where every mother has an advocate and every family can thrive.

Warmly,
Charlee Tchividjian

A handwritten signature in black ink, appearing to read 'Charlee Tchividjian'.

Founder and CEO of Every Mother's Advocate



WE EXIST

*to prevent family separation by
advocating for mother's in crisis.*



PARTNER

Partnering with local organizations and churches in mission critical markets.



EQUIP

Equipping communities with an outcome-based model.



REACH

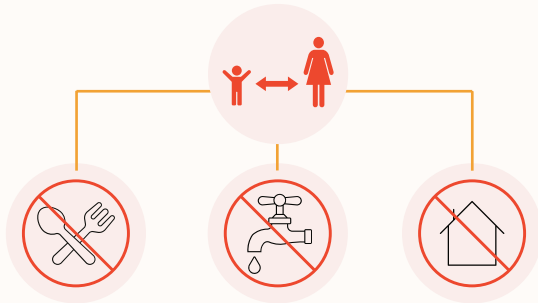
Reaching every mother in crisis with holistic support and measurable impact.

OUR VISION

A world where mothers are no longer separated from their children due to preventable causes, but are equipped and empowered to raise their children in stable and nurturing homes.

BEHIND EVERY CHILD AT-RISK

There is a mother in crisis.



ON AVERAGE,

76%

OF CHILDREN IN FOSTER CARE WERE REMOVED FROM THEIR HOMES BECAUSE OF UNMET BASIC NEEDS (i)

WE ARE A COMMUNITY
COMMITTED TO
ERADICATING THE
PREVENTABLE CAUSES OF
family separation

The ÉMA Program is designed to serve a vulnerable population of mothers who are experiencing poverty, crisis, or child welfare involvement. The program provides mothers with access to immediate, comprehensive, and ongoing care - empowering moms to raise their children in stable and nurturing homes.

(i) <https://fosteringcourtimprovement.org/fl/summary>



Our Model

WE BELIEVE IN A WORLD WHERE EVERY MOTHER IN CRISIS HAS AN ADVOCATE

VOLUNTEER



EMA ADVOCATE



EMA COORDINATOR

COACH

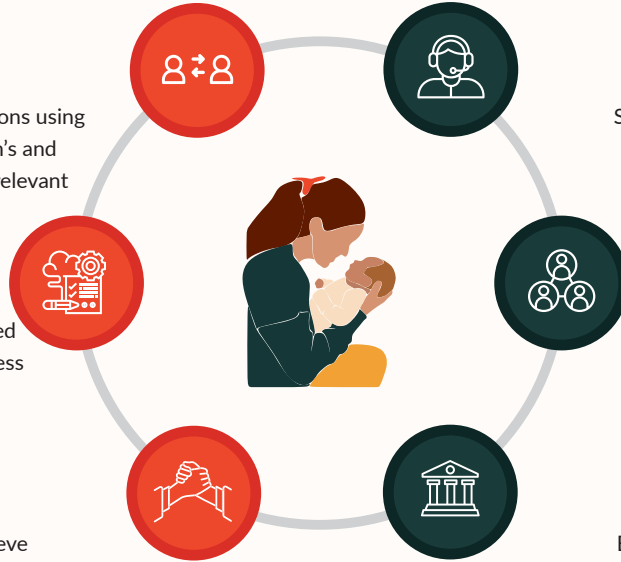
Coaching moms in 1:1 sessions using trauma-informed curriculum's and engaging in discussions on relevant topics.

GUIDE

Guiding a mom with provided tools and resources to address her current needs.

EMPOWER

Empowering a mom to achieve the goals on her action plan by setting weekly tasks and offering accountability.



SUPPORT

Supporting and supervising the advocate-mom relationship and offering targeted case management as needed.

CONNECT

Guiding a mom with provided tools and resources to address her current needs.

REPRESENT

Empowering a mom to achieve the goals on her action plan by setting weekly tasks and offering accountability.

STAFF

Serving Moms Who Are:

- At-Risk of Family Separation
- Have Children in Foster Care
- Experiencing Poverty



Our Best Year Yet

**1.1 Million Dollars
RAISED**

**1,457 Mothers and Children
IMPACTED**

**198 ĒMA Advocates
TRAINED**



Celebrating a Milestone *Year*



National Expansion

The Affiliate Partner Program launched in 2022 and expanded ēMA into four new locations. We partnered with four values-aligned, existing organizations who implemented their own ēMA Program and advanced the work of mother advocacy throughout New York City, Indiana, Los Angeles, and Melbourne, Florida. Through these partnerships, we saw 145 mother's served and over 290 children impacted.



Our First Million Dollar Year

Because of the radical generosity of our faithful community of partners and donors, we raised over \$1 million for the first time. More importantly, every dollar gifted represents the moms and children served and families preserved across the country.



Volunteer Advocate Record

ēMA Advocates are the backbone of our work. While launching the ēMA Program nationally through affiliate partners, we also developed and hosted over 20 Advocate Trainings virtually and in-person equipping 197 volunteers nationally to join this collective mission for mother advocacy.



New Church Partners

The local Church operates as our missional partner in each city that we exist. In 2022, we onboarded 14 new Churches to fuel our work with volunteers, resources, and meeting spaces for our team, volunteer Advocates and mothers to utilize. Our community of Church partners have made our work more effective and sustainable this year.



Benevolent Fund

As the number of mother's served increased in 2022, so did the number of needs we were able to meet throughout the year. With the help of generous partners and CarePortal, the ĒMA Program responded to over 175 requests equating to over \$75k for essential items no mother should be without such as food, diapers, household items, rent assistance, and transportation.



Community of Practice

In 2022, Every Mother's Advocate continued to invest in our volunteer Advocates by implementing a community of practice through 20 trainings and 6 workshops. These sessions provided opportunities for our Advocates to deepen their knowledge, develop new skills, and build meaningful relationships with one another. We focused on a variety of topics from field experts on trauma-informed care, redemptive mother advocacy, and relevant solutions to the widespread barriers mothers in the ĒMA Program experience. By fostering a community of practice, we were able to create a culture of continuous learning and improvement.

A Growing Team

Since January 2022, our team grew by six employees to support both local and national ministry growth. In order to accommodate the expansion, our Headquarters office in South Florida expanded into a second location that was generously provided by Riverside Church in order to deepen our work.



Charnelle Charlestin
AFFILIATE
MANAGER



Krysten Cline
VICE PRESIDENT
OF PROGRAMS



Cristina Galloway
CHIEF OPERATING
OFFICER



Leontyne Hall
ADVOCACY CASE
MANAGER



Lindy Johnson
TRAINING &
CONTENT MANAGER

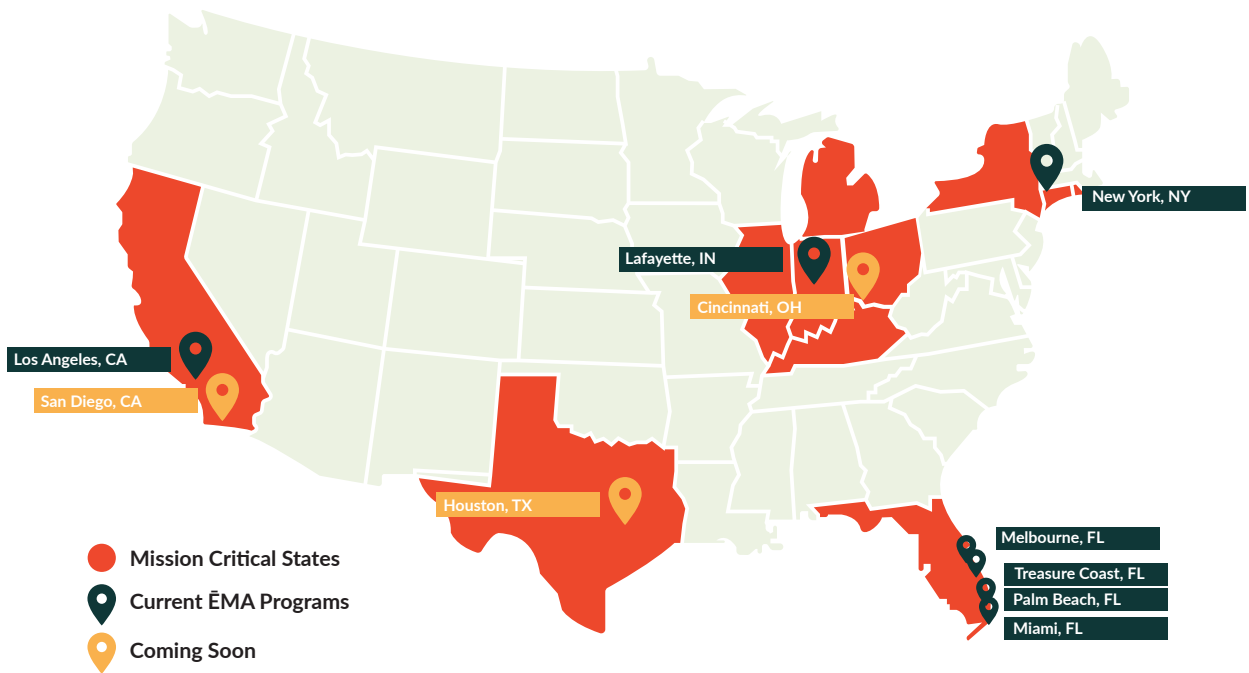


Babie-Marie Henriquez
CLIENT SERVICES
COORDINATOR

National Impact

Scaling through Affiliate Partnerships

Affiliate Partnerships allow us to scale ĒMA as a “plug-and-play” program. We train and equip values-aligned, existing organizations to operate their own ĒMA Program and effectively advocate for at-risk mothers in their local communities to preserve their families. We have seen how providing the structure, content, and support of a proven model for mother advocacy fills a unique gap for front-line organizations who are serving families in crisis.



Florida Impact

Flagship Program in Broward County

Every Mother's Advocate was founded in Broward County, FL where our ĒMA:Broward local chapter developed, tested, and evaluated our program for three years”.

Today, ĒMA:Broward is the only chapter operated under the umbrella of Every Mother's Advocate and serves as the program model for quality and impact. ĒMA:Broward is where we enhance and evaluate program quality.



5,550+

Advocate hours logged



17%

removal decrease in
Broward County



1,000+

service referrals made

Ways For Life - Liz McGinley

“A mom met with her Advocate and they went through the first lesson. They both enjoyed it so much; it took them almost 2 hours. Even though the mom has some older children, she felt the lesson was very informative and helped her in her role as a mom. Generally, the mom cannot have a conversation with the father of her first 3 children, without it breaking out into a severe argument. But after having gone through the lesson, the mom for the first time, was able to remain calm and gently ask him to help her find a solution to the topic they were discussing. The father's disposition seemed to change as well as the mom kept in mind all she had learned. She called her Advocate and told her how they actually had a decent conversation, and she attributed it to the lesson she recently had gone over. Both the mom and Advocate are looking forward to going through all the lessons together.”



**TOTAL SERVED
SINCE 2019:**

1007

Mothers Served

2300+

Children Impacted

32

Church Partners

258

Advocates

7

Cities

8

Affiliates Partners

**ĒMA PROGRAM
OUTCOMES**

97% of families at-risk of separation stayed together

83% of mother's achieved stability and self sufficiency

78% unemployed mothers achieved employment

55% employed mothers increased their income

1.1M of new income generated by mothers

75% mothers increased in their social support

82% of mothers decreased in parental stress

77% of mothers decreased in depressive symptoms

91% increased in nurturing parenting practices

***For a Mother in Crisis,
Advocacy Changes
Everything.***



My Advocate was always there for me and made me feel empowered by always reminding me that “I could do it.”

I first heard about ĒMA through a Thanksgiving drive when I was living at a shelter. I was desperate for the support and help as a single mom. Life is stressful, work is stressful, but everyone at ĒMA made me feel so supported which was a huge confidence boost for me. My Advocate was always there for me and made me feel empowered by always reminding me that “I could do it.” If I was feeling overwhelmed or just having a rough day, she always had something encouraging to say. Before ĒMA, I felt nervous about being in school again and taking tests, but she helped me find my confidence and encouraged me to take my pre-nursing exam. I surprised myself when I passed with a 93%, and now I’m so excited to start my new career through the nursing program, find a higher paying job, be more self-sufficient, and support my family.

- Keria

*Name changed for privacy

Meet Brittany

Brittany had a rough and traumatic start in life, growing up in the foster care system. When she delivered her first baby while in a group home, she was hopeful that she could provide her child with the loving home she never had. However, her hopes were shattered when the baby was removed from her care in the hospital due to her postpartum depression and lack of support.

That's when she was connected to the ĒMA Program and met her Advocate. With some support and guidance, Brittany began to dream again. She wanted to work and buy a car so she could get to where she needed to go and reunify with her daughter. Brittany worked hard and saved up money to buy a car, but was still short. This was the only thing stopping her from getting her daughter back and it felt like an insurmountable obstacle.

The ĒMA Program was able to help Brittany navigate her challenges, making it possible for her to purchase her first vehicle. With the right support in place, Brittany was finally able to drive to work, school, and most importantly, to care for her daughter. For Brittany, advocacy changed everything.

*Name changed for privacy



The Cost of Prevention

FOR ÉMA, IT COSTS:

\$2,500

Per year on average to
preserve one family.

FOR THE STATE, IT COSTS:

\$38,850

Per year on average to place and
house one child in foster care (ii).

(ii) Rosinsky et al. (2021)

“The relationships that are built between advocates and mothers are truly special and transformative.”

“I support ĒMA because of its unique and proactive approach to preventing family crises by focusing on supporting mothers, which in turn helps keep families together. The relationships that are built between advocates and mothers are truly special and transformative. Charlee Tchividjian and her team have created an organization that brings humanity back into the community by placing value and dignity with every mother they advocate for. The ĒMA team is both passionate and compassionate for the plight of marginalized mothers. It’s program has demonstrated its ability to bring stability in an unpredictable world and cultivate a family culture in which mothers and their children can not only survive but also thrive, by providing advocate support, nurturing healthy relationships, and granting access to appropriate resources. I’m proud to support ĒMA and their mission to empower every mother to be the mother God has created her to be.”

- Laura Koeblytz

2022 Financials

Raised: \$1,157,061

Distributed: \$992,937

DISTRIBUTION OF EXPENSES

ADMINISTRATION: \$ 148,555 | 15%

FUNDRAISING: \$173,340 | 17%

PROGRAM: \$671,042 | 68%





The Heart of an Advocate

What made me want to become an advocate is trying to see what we could do to help. I know that the best place for the children to be is with their biological families. I just really love getting to know her as a mom. I don't know all the intricacies, all the details of what's brought her to where she's at, but I can be her cheerleader every week that we get on the call, I can encourage her and validate all the good things that she's doing. That that brings me a lot of joy.

- JULIE

What's Next?

1

STRENGTHEN AND EXPAND ĒMA:BROWARD CHAPTER

COURSE DEVELOPMENT

Pilot a trauma-informed Parenting curriculum track for Advocates to use with reliable evaluation tools.

BROWARD COUNTY JAIL

Implementing successful Beta-Test of the ĒMA Program inside Jails to a larger population of women.

THERAPY INTEGRATION

Expand the scope of ĒMA's program through a pilot program integrating in-person and tele-health therapeutic services.

2

EXPAND THE AFFILIATE PARTNER PROGRAM

We are building a national network of support for moms in crisis, because we believe that mothers have the most unique power to reshape societies. Our goal is to expand the ĒMA Program by securing an additional 6 affiliate partners in mission critical markets. Through this collective impact, we will collect comprehensive programmatic data across all affiliate locations and conduct a cross-analysis study to determine program effectiveness.

3

PROTOTYPE AND PILOT "ĒMA LIGHT"

We believe that an open sourced version of the ĒMA model will increase our model's accessibility to a wider audience, offering easier on-boarding for women seeking to advocate for moms within their own communities. With the product of ĒMA Light, we are building a national community of women who share in values, practice, and learning of redemptive mother advocacy.

ĒMA Light will target women who have found themselves caring for a mom in crisis, but may lack the "know how" to effectively advocate for her needs in a way that offers real change. It also offers engagement opportunity for women who don't have access to an ĒMA Program in their city, but want to advocate for a mom in crisis.



When I first came to ĒMA, I had a lot of self doubt but I was instantly welcomed by a team of women that helped guide me and told me I wasn't alone. I know I'm on the right path because of the amazing people around me. They told me I didn't have to carry all the weight on my own any longer. My Advocate helped me feel empowered by encouraging me to believe in myself and take control of my own life. My children motivate me to keep going and to fight to show them more. I know we're going to have a great bond and this brings me a lot of peace. I'm so excited to finish the ĒMA Program and be able to help and advocate for other mothers.

- LATRICE

*"My children motivate me to keep going
and to fight to show them more."*





Thank you for your generosity and kindness. Words cannot express the depth of our gratitude for your incredible support of Every Mother's Advocate. Your unwavering dedication to our work is truly inspiring. Because of you, we can reach mothers in crisis, offering them a lifeline during their darkest moments. Your generosity is making a direct and meaningful impact on these families, providing them with the guidance, resources, and support they desperately need to keep their families together.

Thank you for being a beacon of hope and for joining us in our mission. We are profoundly grateful for your belief in our work and for your commitment to making a difference in the lives of these mothers and their children.

Thank You!



Every Mother's Advocate

ēma
EVERY MOTHER'S ADVOCATE



@every_mothers_advocate
1101 NW 33rd St, Pompano Beach, FL 33064
everymothersadvocate.org